



Company Profile

浙江鸣飞新材料有限公司
Zhejiang Mingfei New Materials Co., Ltd

To be the best supplier of paper cup materials

MINGFEI

Factory Address: #30, Zhenxing South Rd, Deqing, Huzhou City, China 313223

E-mail: sales@zjmfxc.com

Website: www.zjmfxc.com



CONTENTS

2023



1. **Pains & Expectations**
2. **Achieve Expectations**
3. About Mingfei
4. **Future Plan**

PART 01

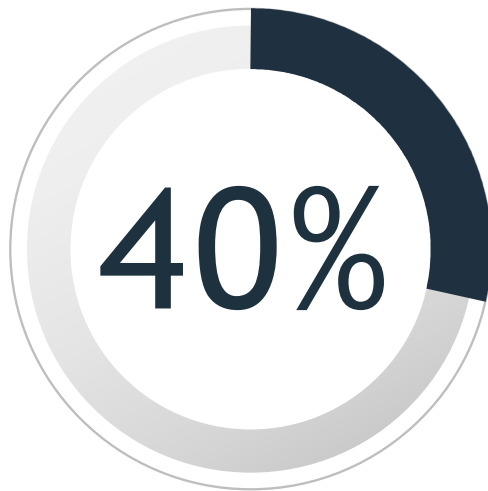


Pains & Expectations



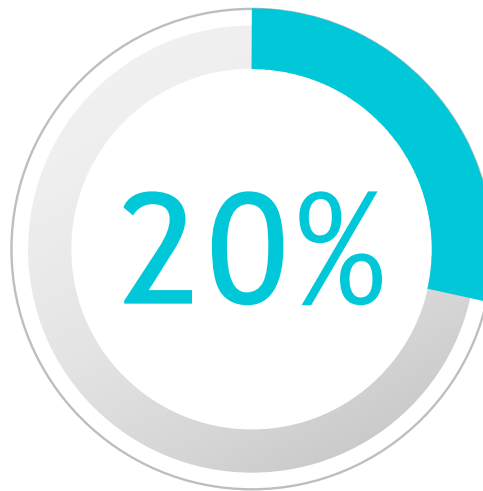


MAKE BUSINESS LONG TERM



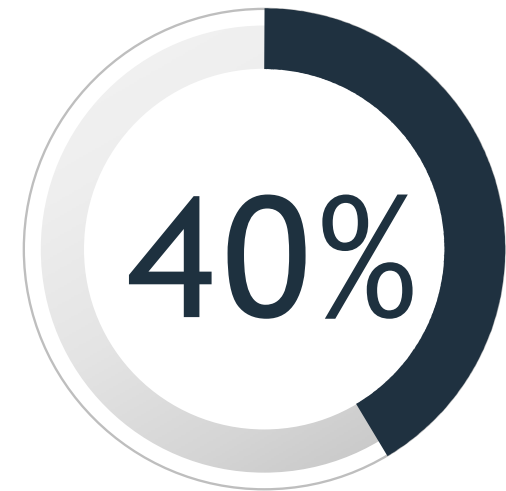
QUALITY STEADY

1. PAPER QUALITY
2. PRODUCTION QUALITY
3. PRINTING QUALITY



SERVICE FAST

1. PRICING FAST ACTION
2. COMPLAINING ACTION
3. AFTERSALES FAST ACTION



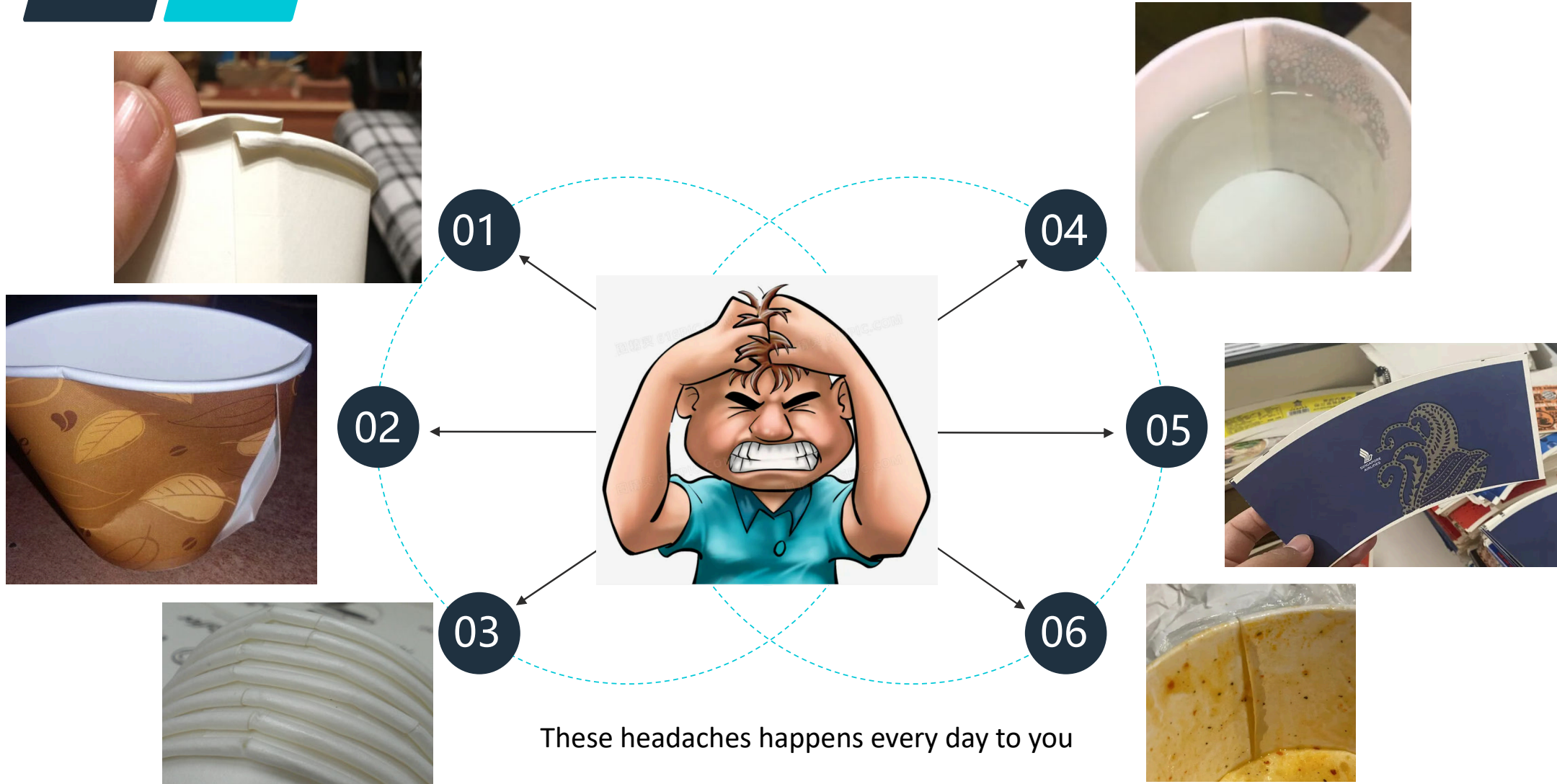
PRICE SUPPORT

1. PRODUCT PRICE SUPPORT
2. SHIPPING PRICE SUPPORT
3. SAMPLE SUPPORT

SR



HEADACHES IN QUALITY



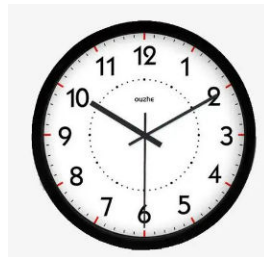


PAINS IN SERVICE

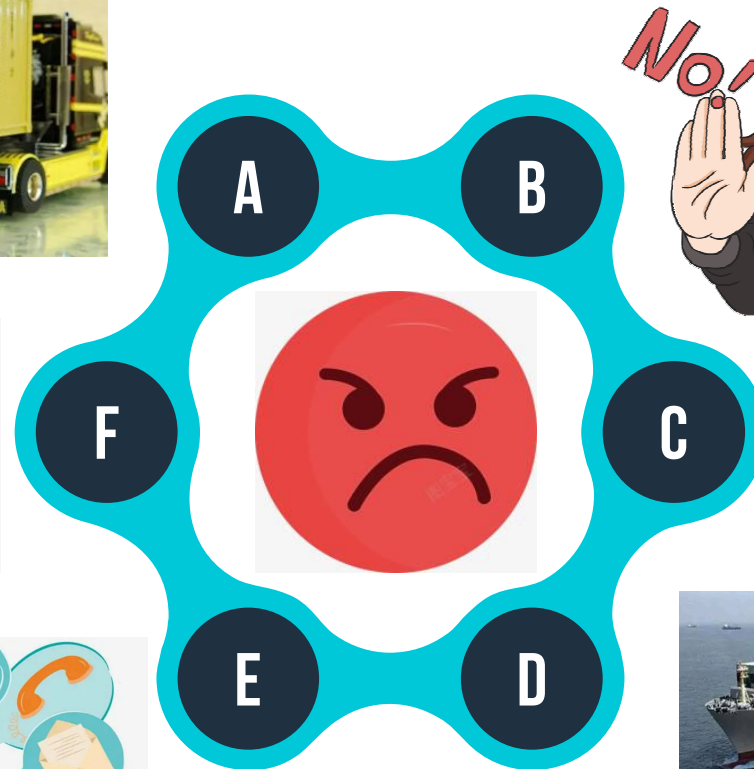
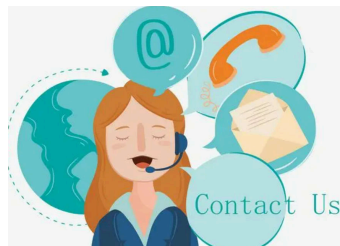
More than 60 days
delivery time,
missing busy season



Taking 2 days to response,
losing your business



No answering when
problems happens,
losing your customers



Refuse any compensation,
losing your customers

No after-sales at all
Making you confused



50~60 days sailing time,
missing busy season



YOUR EXPECTATIONS



QUALITY

Paper Impermeable

Side Sealing well

Without broken

Good Rolling

Diecut Correct

Coated firmly



SERVICE

Delivery fast

One-hour Repone

Always answering

Undertake responsibility

Taking fast ship to send goods

Solve the problem honestly



YOUR EXPECTATIONS



HOW CAN WE ACHIEVE THAT?

PART 02



Achieve Expectations



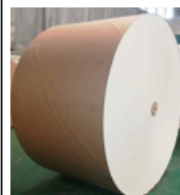




How to Achieve Quality



1、PE COATED PAPER ROLL QUALITY CONTROL

There is a completed S.O.P of PE coated paper roll quality controlling:

PE coated paper roll for making paper cup/bowl/lunch box and so on.					
Sr#.	INSPECTION ITEM		QUALITY STANDARD REQUIREMENTS	REMARKS	PHOTO FOR REFERENCE
1	Appearance	Surface	Without bright line, no bubble, no broken hole, and no impurities.	Regular Standard	
		Side cut	Even, clean, without deckle edge		
		End face	Even, and NOT Concave-convex		
		Connection	≤1 in Each roll, must be marked where the connection is.		
2	Corona Treatment	Printing side	At least 38 Dyne for the double PE printing side	Using Dyne pen to test	
3	Size	Width	Accordig to the width confirmed in PI, ±1mm is allowed.	Using ruler to measure	
4	PE	PE gsm	15gsm/18gsm	Take the PE off the paper, and weight it to test.	
		PE fastness	PE must be fully coated on the paper, can not be stripped.	Tear the paper to test	
5	Packing	End cap	The core must be with end cap at each side for jumbo rolls	As per PACKING INSTRUCTION	
		Roll Diameter	Regularly between 1.1-1.35 meter for jumbo roll, 0.8-0.9m for bottom		
		Outer packing	Each roll packed by kraft paper firstly, and then by PE wrapping film, there must be a circular paper board at each end face.		
6	Shipping Mark	Label	Each roll must be with a label outside, showing the item name, specification, width, net weight, roll number and so on.	As per SHIPPING MARK	

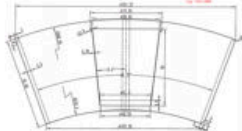






How to Achieve Quality



2、PAPER CUP FAN QUALITY CONTROL

There is a completed S.O.P of paper cup fan quality controlling:

PE coated paper roll for making paper cup/bowl/lunch box and so on.					
Sr#.	INSPECTION ITEM		QUALITY STANDARD REQUIREMENTS	REMARKS	PHOTO FOR REFERENCE
1	Appearance	PE coating side	Without bright line, no PE bubble, no broken hole, and no impurities.		
		Printing side	Die cut should be Even, clean, without deckle edge		
			clear printing, completed pattern printed, color deviation within 90% at least as sample.		
			Without paper powder on the cup fan		
2	Corona Treatment	2PE for printing	At least 38 Dyne for the glossy PE printing side (2PE coating)	Using Dyne pen to test	
3	Size	Dimension	As per diecut drawing, or as per fan sample, size ±1mm is allowed.	Using ruler to measure	
4	PE	PE gsm	15gsm/18gsm	Take the PE off the paper, weight it to test.	
		PE fastness	PE must be fully coated on the paper, can not be stripped.	Tear the paper to test	
5	Packing	Pallet packing	Must be wrapped by PE film to avoid dust and moisture, at least 4 strings to make pallet packing strong, 1 ton/pallet	As per PACKING INSTRUCTION	
		Carton packing	About 25~30kg/carton, with a PE bag inside, carton is made by at least 3-layer carton paper board.		
6	Shipping Mark	Label or fan sample	(1) Each pallet must be with a label outside, showing item name, size, specification, weight, and so on. (2) Each carton put a piece of fan, to make it easy to see what design inside	As per SHIPPING MARK	

SR



QC System for material



① Fetch material sample



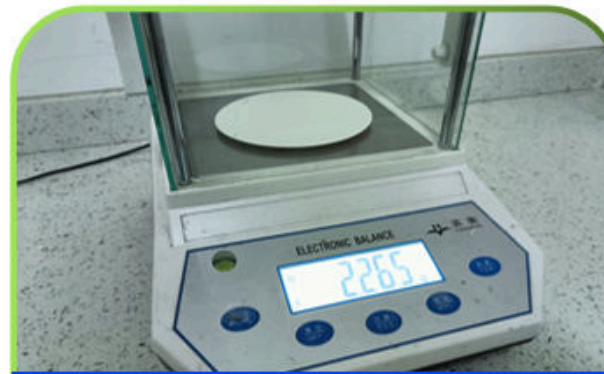
② Make a material sample



③ Inspect paper thickness



⑥ Inspect paper infiltration



④ Inspect paper base weight



⑤ Food grade Inspection

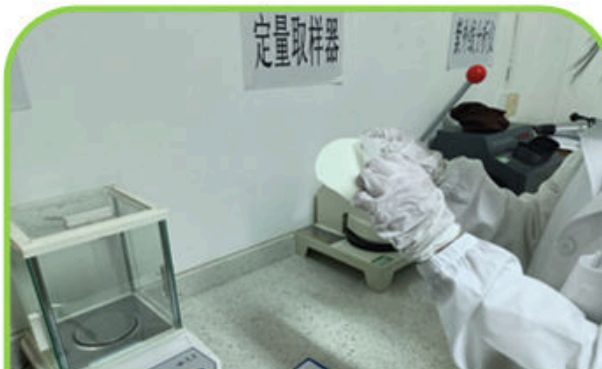
SR



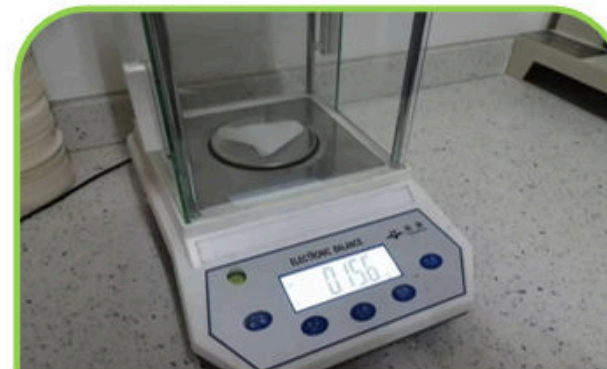
QC System for PE coated roll



① PE Coating Inspection



② PE Fastness Inspection



③ PE Thickness Inspection



④ Roll Flat Inspection



⑤ Roll Width Inspection



⑥ Shipping Marks Inspection

SR



QC System for paper cup fan



① Flexo Printing Inspection



② Colors Inspection



③ Printing Position Inspection



④ Diecutting Inspection



⑤ Cut-sheet Inspection



⑥ Die-cutting good situation

SR



QC System for paper cup fan



⑦ Cup Fan Pallet Inspection



⑧ Fan Packing Inspection



⑨ Shipping Marks Inspection



How to Achieve Service—Co-work

There is a completed S.O.P of order processing to avoid any mistake/misunderstanding:

Order processing	Executive department	Documents	Description
Customer inquiry	Sales department Financial department	Quotation sheet	Make price and Send quotation
Price accepted	Logistic department	Sample Record/ Sample Survey	send samples for confirmation
Collect order List	Sales department/PMC department Purchasing department Production department Technology department	Order Review	To make sure the specifications/delivery time and so on.
Order Review			
Order Confirmed	Sales department Financial department	PI/sales contract, Banking copy	Sign PI/contract and send, Down payment received
Order Schedule	PMC department Purchasing department	Order Schedule Raw materials list	Make schedule for the order
Make Production	Production department	Production schedule	To start mass production
Production Inspection	Production department QC department	1.Key Process Inspection Record 2.Process patrol inspection record 3. Final inspection report	Sales department must confirm printing color/design/packing/ with customer by photos/videos before mass production
Godown entry	PMC department Production department	Godown entry	Store the qualified finished products into warehouse
Balance payment	Sales department Financial department	Balance payment Banking copy	Sales send final PI to customer, To receive balance payment
Book ship	Logistic department	Booking	To book the ship and container.
Loading container	PMC department Logistic department	Outbound delivery order	Loading container and ship Export customs declaration
Send shipping docs	Sales department Logistic department	B/L, Commercial invoice, packing list, CO	Making shipping documents and send by DHL to customers(or Telex release)

SR



How to Achieve Service—Fast Delivery



- 3 PE coating machine, 3 Flexo printing machine, 7 diecutting machine, 2 sheet cutting machine.
- 4500 tons output /month, in which 2000 tons are for export.



- 15000 m² area with 80 staffs, 70% of them with 10-year experience in the field of PE coated cup paper.



Large production capacity to make delivery time to be 20~25 days, so that your order can be finished fast.



How to Achieve Service—Fast Shipping



DIRECT SHIP FAST SAILING

- To HCM: 3~4 days
- To Jarkata: 5~8 days
- To Sohar: 14~20 days
- To Jeddah: 15~17 days
- To Riyadh: 21~25 days
- To Dubai: 13~15 days
- To Istanbul: 20~25 days
- To Aqaba: 18~20 days
- To Sokhna: 18~20 days

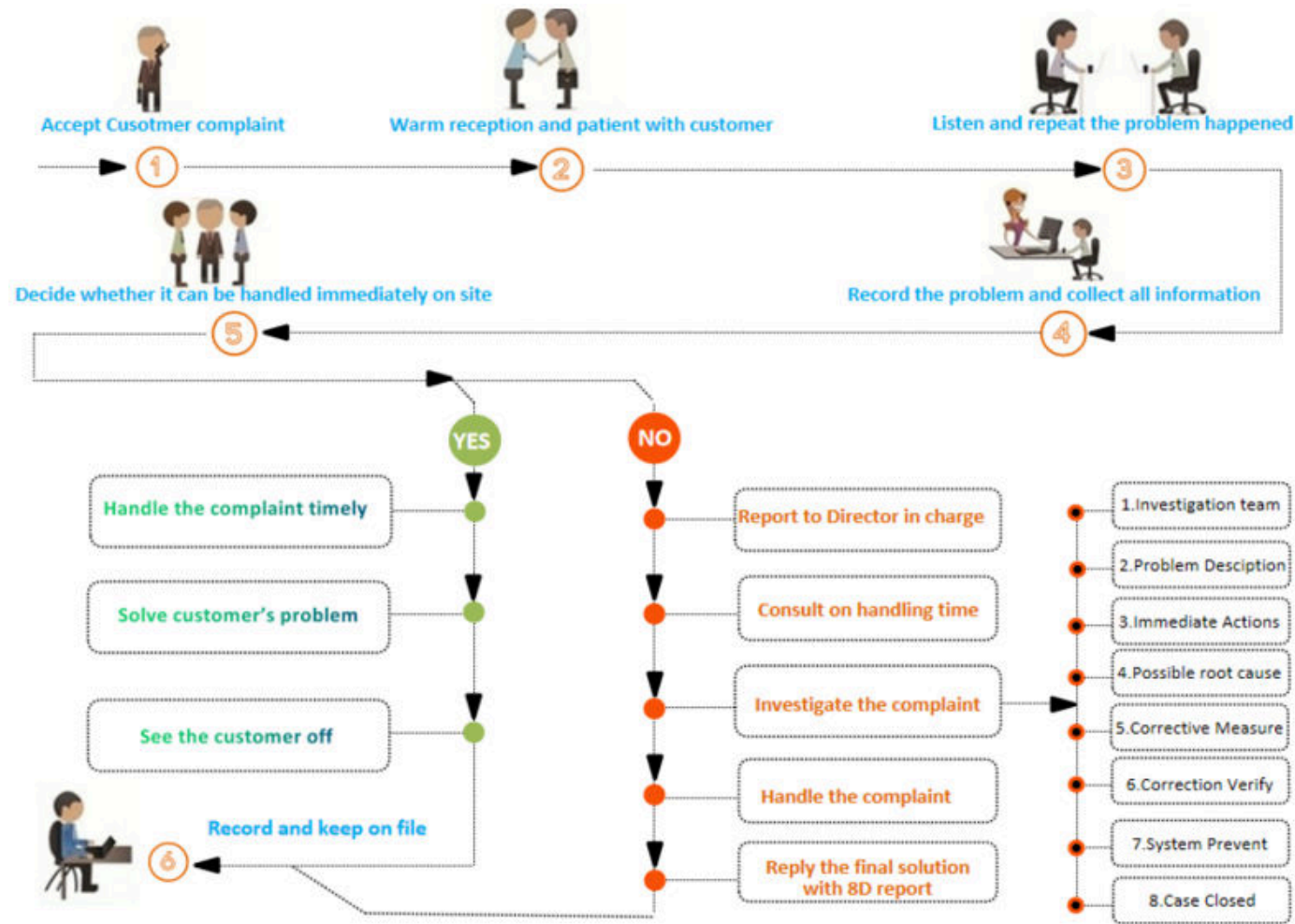
.....

Loding from Ningbo port, FAST direct ship, so that you can get the goods much earlier.

SR



How to Achieve Service—After-Sales



A professional after-sales system provided, so that it can help to win back your customers.



Achieve Expectations



**Well, Where Is
Such A Supplier?**



PART 03



IT IS Mingfei





Company Introduction



50000MT
Capacity/year

100
Containers
Export/month

TOP5
All Over China

1. With 15 Years PE coating experience, Specializing in paper cup fan, cup bottom roll, paper sheet, and PE coated paper roll.
2. About 80 staffs, 50 people are professional technicians, 70% of them has been in the field of PE coating over 15 years .
3. QS certified factory workshop 15000m², SGS/FDA certified paper cup raw materials with 3 complete set of brand new production line and Quality Control System.

SR



Company Introduction



- 3 PE coating machine, 3 Flexo printing machine, 7 diecutting machine, 2 sheet cutting machine.
- 4500 tons output /month, in which 2000 tons are for export.



- 15000 m² area with 80 staffs, 70% of them with 10-year experience in the field of PE coated cup paper.





Main Product—PE coated paper roll



01

QUALITY GRADE: High, Medium, Normal Grade

02

SPECIFICATION:

Capacity: 10000 tons/month

Width: 600mm~1300mm

Base weight(gsm):
150/160/170/180/190/210/230
/240/250/260/280/300/320

03

LOADING CAPACITY: 25~27 tons for 1x40HQ

04

PACKING: (1) Each roll wrapped by kraft paper and PE film
(2) With 3 inch or 6 inch core
(3) With polywood pallet loaded in container

05

DELIVERY: 20~25days after down payment received

SR



Main Product—Paper Cup Fan



01

QUALITY GRADE: High, Medium, Normal Grade

02

SPECIFICATION:

Capacity: 2000 tons/month

Printing: flexo 1~6 color

Base weight(gsm):
150/160/170/180/190/210/230/240
250/260/280/300/320

03

LOADING CAPACITY: 25~27 tons for 1x40HQ
15~16 tons for 1x20ft

04

PACKING: (1) About 1 ton packed on a polywood pallet
(2) The rest to be packed in plastic woven bag
(3) With polywood pallet loaded in container

05

DELIVERY: 30days after down payment received

SR



Main Product—Paper sheet



01

QUALITY GRADE: High, Medium, Normal Grade

02

SPECIFICATION:

Capacity: 3000 tons/month

Base weight(gsm): 150/160/170/180/
190/210/230/240/250/260/280/300/320

Size: Width=450~1200mm
Length=450~1200mm

03

LOADING CAPACITY: 25~27 tons for 1x40HQ
14~15 tons for 1x20ft

04

PACKING: (1) Sheets put on a polywood pallet.
(2) About 1 ton packed on the pallet
(3) With polywood pallet loaded in container

05

DELIVERY: 20~25days after down payment received



Main Product—Cup Bottom Roll



01

QUALITY GRADE: High, Medium, Normal Grade

02

SPECIFICATION:

Capacity: 3000 tons/month

Width: 50~300mm

Diameter: 800~900mm

Base weight(gsm): 150/160/170/180/
190/210/230/240/250

03

LOADING CAPACITY: 25~27 tons for 1x40HQ
15~16 tons for 1x20ft

04

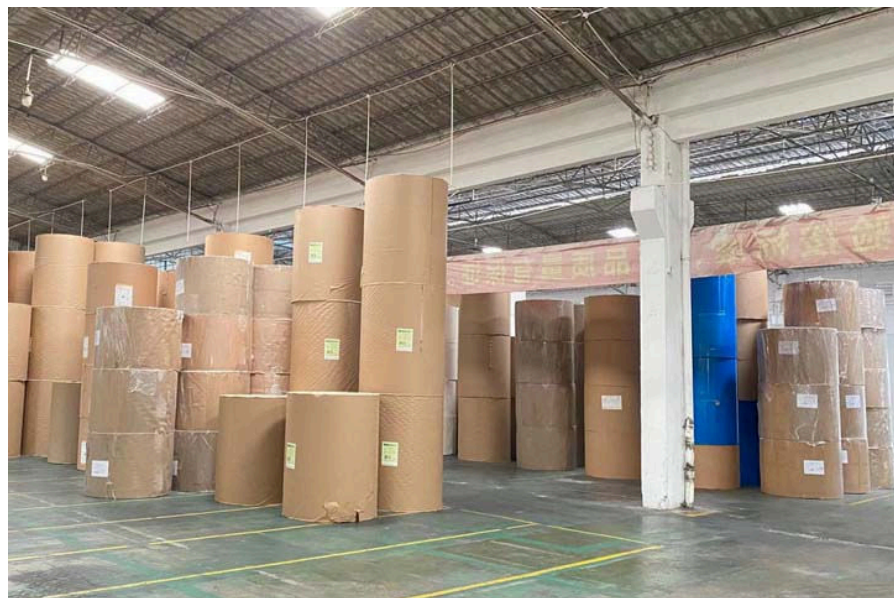
PACKING: (1) Rolls put on a polywood pallet.
(2) About 1 ton packed on the pallet
(3) With polywood pallet loaded in container

05

DELIVERY: 20-25days after down payment received



Main Product—Kraft Cup Paper



01

Base weight(gsm): 150/160/170/180/190/200/210/220/230/240/250/260/270/280/300/310/320

02

SPECIFICATION:

Coated: 1PE & 2PE available

Width: 600mm~1300mm

Core & Dia: Core=3 or 6 inch,
Dia=max 1200mm

03

LOADING CAPACITY: 25~27 tons for 1x40HQ

04

PACKING: (1) Each roll wrapped by kraft paper and PE film
(2) With 3 inch or 6 inch core
(3) With polywood pallet loaded in container

05

DELIVERY: 25~30days after down payment received



SR



Main Product—Clay Coated Paper



01

Base weight(gsm): 190/210/240/280/300/320/330

02

SPECIFICATION:

Features: **Food grade**

Top side clay coated(shiny & smooth)

Other side is matt with PE coated

Width: 600mm~1300mm

Core & Dia: Core= 6 inch,
Dia=max 1200mm

03

LOADING CAPACITY: 25~27 tons for 1x40HQ

04

PACKING: (1) Each roll wrapped by kraft paper and PE film
(2) With 6 inch core
(3) With polywood pallet loaded in container

05

DELIVERY: 25~30days after down payment received





Main Product—FBB/C1S PAPER



01

Base weight(gsm): 215/235/270/295/325/350 etc.

02

SPECIFICATION:

Features: **Non Food grade**

Top side clay coated(shiny & smooth)
The other side is matt

Width: 600mm~1300mm

Core & Dia: Core=6 inch,
Dia=max 1200mm

03

LOADING CAPACITY: 25~27 tons for 1x40HQ

04

PACKING: (1) Each roll wrapped by kraft paper and PE film
(2) With 6 inch core
(3) With polywood pallet loaded in container

05

DELIVERY: 25~30days after down payment received



PART 04

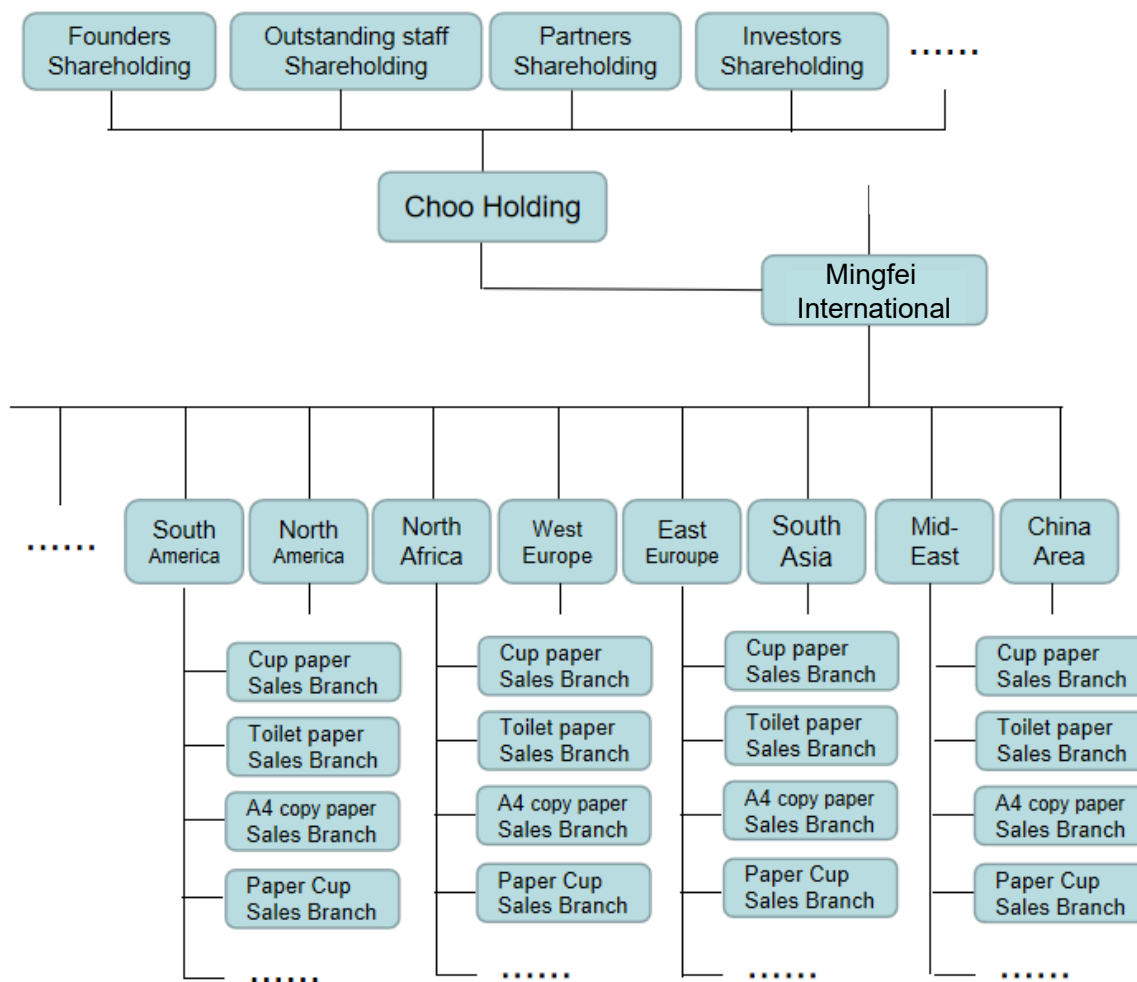


FUTURE





FUTURE PLAN



SR



Contact us



DAMON ZHENG

DIRECTOR

T: +86-1596 8871 306

W: www.zjmfxc.com

E: damon@zjmfxc.com

A: #30, Zhenxing South Rd, Deqing
Hangzhou, China 313223



ZHEJIANG MINGFEI NEW MATERIAL CO., LTD
FACTORY OF **PAPER CUP FAN/ROLL/SHEET**





THANK YOU